

BKT

GROWING TOGETHER

MULTIUSE

AGRO-INDUSTRIAL TIRES



A G R O - I N D U S T R I A L T I R E S

MULTIUSE

You are looking for a multi-use tire? BKT has the perfect product for your needs.

Designed for both agricultural and industrial applications, these tires are suitable for any type of terrain.

Their strength consists in compounds, which have been specifically developed to avoid cuts and wear, so that they feature long durability and high load capacity.

BKT multi-purpose tires are suitable for a variety of applications ranging from municipality operations to transport in agriculture. As a result, they are extremely versatile not least thanks to top self-cleaning properties enabling easy transfer from field to road. These tires are the response to your needs.



Radials

Radial tires have cord plies that are arranged running radially from bead to bead around the tire. Sidewall and tread have independent functional features providing more flexibility, great performance, durability, and fuel economy.



Bias

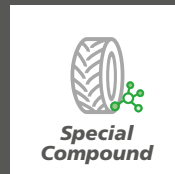
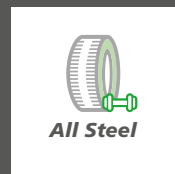
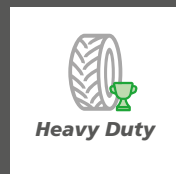
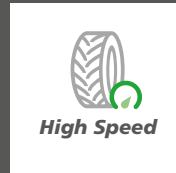
Bias tires have cord plies that are arranged running diagonally from bead to bead across the tire. Layers overlap forming a crisscross pattern. This design features extraordinary sidewall resistance, puncture resistance and high load capacity.



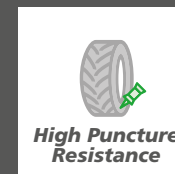
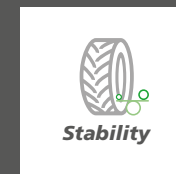
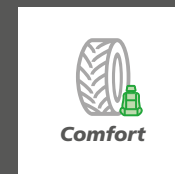
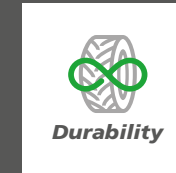
AGRO-INDUSTRIAL TIRES

MULTIUSE

TECHNOLOGIES



PERFORMANCE



MULTIUSE TIRES



MULTIMAX MP 513



[p. 8]



MULTIMAX MP 522



[p. 9]



MULTIMAX MP 527



[p. 10]



AT 621



[p. 16]



MP 567



[p. 18]



MP 570



[p. 21]



MULTIMAX MP 540



[p. 11]



RT 747 AGRO INDUSTRIAL



[p. 12]



CON STAR



[p. 13]



MP 585



[p. 21]



MP 590



[p. 22]



MP 600



[p. 23]



AT 603



[p. 14]



AS 504



[p. 24]





Radial



MULTIMAX MP 513

MULTIMAX MP 513 has been designed by BKT for multi-purpose vehicles in municipality/maintenance and transport applications, for both agricultural and industrial uses. It is perfect for universal vehicles and fertilizer trucks. Thanks to the strong steel-belted nylon casing, MULTIMAX MP 513 allows to carry heavy loads at high speeds providing a comfortable driving experience. It ensures a longer service life and traction along with outstanding self-cleaning properties.

Technologies



High Speed



Steel Belted

Performance



Durability



Handling & Comfort



Traction



Self-Cleaning

Ø 17"	Tire size	LI/SS	RIM		S.W. (mm)	O.D. (mm)	SLR (mm)	RC (mm)	SRI (index)	Version
			Rec.	Alt.						
	425/55 R 17 MPT	134 G	13	13.00	421	900	399	2645	-	STD
Ø 18"	365/70 R 18 MPT	133 G	11	11 SDC ; 12 ; 12 SDC	360	969	448	2933	-	STD
Ø 20"	375/70 R 20 MPT	136 G	12	W 10 ; DW 10 ; 11 ; 11 SDC ; W 11 ; DW 11 ; 12 SDC	377	1034	472	3121	-	STD
	405/70 R 20 MPT	136 G	13	13 SDC ; 12 SDC	407	1076	493	3253	-	STD
	425/75 R 20 MPT	148 G	13	13 SDC ; 11 SDC ; 12 SDC ; 11 ; 12	421	1146	521	3479	-	STD
Ø 24"	495/70 R 24 MPT	155 G	W 16 L	DW 15 L ; DW 16 L ; W 15 L	499	1304	588	3974	-	STD

STD: Standard



MULTIMAX MP 522

MULTIMAX MP 522 is the BKT multi-purpose tire developed for agro-industrial applications. It is suitable for all lifting and loading operations on vehicles such as telehandlers and compact loaders. Stability and traction are its strengths as well as outstanding puncture resistance. Thanks to its special compound, MULTIMAX MP 522 has an incredible cut and chip resistance.



Radial



Technologies



Steel Belted



Special Compound

Performance



Stability



Traction



High Puncture Resistance



Cut and Chip Resistance

Ø 18"	Tire size	LI/SS	RIM		S.W. (mm)	O.D. (mm)	SLR (mm)	RC (mm)	SRI (index)	Version
			Rec.	Alt.						
	280/80 R 18 IND	132 A8/B	W 9 ; 9 ; 9 SDC	W 8 ; W 10	282	907	421	2727	350	STD
	340/80 R 18 IND	143 A8/B	11 ; 11 SDC ; W 11	W 10 ; 12 ; 12 SDC	343	1001	458	3002	475	STD
Ø 20"	340/80 R 20 IND	144 A8/B	11	W 10 ; 11 SDC ; W 11 ; 12 ; 12 SDC	343	1052	481	3212	500	STD
	380/75 R 20 IND	148 A8/B	W 12	W 11 ; 11 ; 12	384	1074	483	3251	500	STD
	400/70 R 20 IND	149 A8/B	13	12 SDC ; 13 SDC ; 14	404	1068	476	3199	525	STD
Ø 24"	400/70 R 24 IND	152 A8/B	13	DW 12 ; 13 SDC ; DW 13 ; DW 13 L ; DW 14 L	404	1170	533	3527	575	STD
	400/80 R 24 IND	162 A8/B	DW 13	DW 12 ; DW 13 L ; DW 14 L	404	1250	553	3778	600	STD
	440/80 R 24 IND	161 A8/B	DW 14 L	DW 13 ; DW 13 L ; DW 15 L	441	1314	586	3956	625	STD
	460/70 R 24 IND	159 A8/B	DW 15 L	DW 14 L ; DW 16 L	465	1250	568	3766	600	STD
	500/70 R 24 IND	164 A8/B	DW 16 L	DW 15 L ; DW 18 L	503	1310	595	3890	625	STD
	540/70 R 24 IND	168 A8/B	DW 16 L	DW 18 L	530	1366	611	4133	650	STD
Ø 26"	480/80 R 26 IND	160 A8/B	DW 15 L	DW 16 L	479	1428	638	4287	675	STD
Ø 28"	440/80 R 28 IND	156 A8/B	DW 14 L	DW 13 ; DW 13 L ; DW 15 L	441	1415	643	4278	675	STD

STD: Standard



Radial



Technologies



Block Pattern

Performance



Stability



Traction



High Load Capacity



Cut and Chip Resistance



Hard Surfaces



MULTIMAX MP 527

MULTIMAX MP 527 is a multi-purpose radial tire designed for telehandlers and compact loaders in agro-industrial applications. The tire shows a block pattern design providing excellent traction even on the harder surfaces. The strong sidewall ensures outstanding stability in lift mode. MULTIMAX MP 527 is made of a special cut-and-chip-resistant compound providing and a long service life.

Ø 18	Tire size	LI/SS	RIM		S.W. (mm)	O.D. (mm)	SLR (mm)	RC (mm)	SRI (index)	Version										
			Rec.	Alt.																
	340/80 R 18 IND	143 A8/B	11 ; 11 SDC ; W 11	W 10 ; 12 ; 12 SDC	343	1001	455	2944	475	STD										
	360/70 R 18 IND	142 A8/B	11	W10 ; 11 SDC ; W11 ; 12 ; 12 SDC	360	969	439	2887	475	STD										
Ø 20"	Tire size	LI/SS	Rec.	Alt.	S.W. (mm)	O.D. (mm)	SLR (mm)	RC (mm)	SRI (index)	Version										
	340/80 R 20 IND	144 A8/B	11	W10 ; 11 SDC ; W11 ; 12 ; 12 SDC	343	1052	483	3176	500	STD										
	400/70 R 20 IND	149 A8/B	13	12 SDC ; 13 SDC ; 14	404	1068	494	3282	525	STD										
Ø 24"	Tire size	LI/SS	Rec.	Alt.	S.W. (mm)	O.D. (mm)	SLR (mm)	RC (mm)	SRI (index)	Version										
	400/70 R 24 IND	152 A8/B	13	DW 12 ; DW 13 ; DW 13 L ; 13 SDC ; DW 14 L	404	1170	542	3597	575	STD										
	400/80 R 24 IND	162 A8/B	DW 13	DW 12 ; DW 13 L ; DW 14 L	404	1250	578	3834	600	STD										
	440/80 R 24 IND	161 A8/B	DW 14 L	DW 13 ; DW 13 L ; DW 15 L	441	1314	601	3985	625	STD										
	460/70 R 24 IND	159 A8/B	DW 15 L	DW 14 L ; DW 16 L	465	1254	574	3801	600	STD										
	500/70 R 24 IND	164 A8/B	DW 16 L	DW 15 L ; DW 18 L	503	1310	597	4019	625	STD										
Ø 26"	480/80 R 26 IND	160 A8/B	DW 15 L	DW 16 L	479	1428	642	4259	675	STD										
Ø 28"	440/80 R 28 IND	156 A8/B	DW 14 L	DW 13 ; DW 13 L ; DW 15 L	441	1415	648	4270	675	STD										

STD: Standard



MULTIMAX MP 540

MULTIMAX MP 540 has been designed by BKT for multi-purpose vehicles in municipality/ maintenance applications. It is suitable for all universal vehicles. Thanks to the All Steel casing, MULTIMAX MP 540 enables to carry heavy loads at high speeds. In addition, its block pattern design provides outstanding stability and durability.

Ø 20"	Tire size	LI/SS	RIM		S.W. (mm)	O.D. (mm)	SLR (mm)	RC (mm)	SRI (index)	Version
			Rec.	Alt.						
	335/80 R 20	149 K	11	-	340	1044	492	3258	-	STD

STD: Standard



Radial



Technologies



Block Pattern

Performance



High Speed



All Steel

Performance



Stability



Durability



High Load Capacity



Radial



Technologies



Performance



RT 747 AGRO INDUSTRIAL

RT 747 AGRO INDUSTRIAL is a radial agro-industrial tire suitable for compact loaders and telehandlers. Its extra wide lugs provide excellent traction and great stability in lifting operations. It has been designed with a special cut-and-chip resistance compound that enables the tire to carry heavy loads. RT 747 AGRO INDUSTRIAL is the right answer to all general farming operations that need outstanding versatility.

Ø 16"	Tire size	LI/SS	RIM		S.W. (mm)	O.D. (mm)	SLR (mm)	RC (mm)	SRI (index)	Version
			Rec.	Alt.						
	11L R 16	122 A8/8	W 8	W 10 L	290	850	-	-	-	STD
Ø 24"	Tire size	LI/SS	DW 15 L	DW 14 L ; DW 16 L	465	1254	556	3840	575	STD
	500/70 R 24	157 A8/154 B	DW 16 L	DW 15 L ; DW 18 L	485	1320	585	3949	625	STD

STD: Standard



CON STAR

CON STAR is particularly suitable for compact loaders and telehandlers in agro-industrial, lifting and loading applications. It features great traction along with excellent vertical and horizontal stability. CON STAR has been made of a cut-and-chip-resistant compound contributing to an extended tire life-cycle.

Ø 18"	Tire size	RIM	S.W. (mm)	O.D. (mm)	SLR (mm)	RC (mm)	Version	PR	Type	LI/SS												
											Rec.	Alt.										
	340/80 - 18	11	12 ; 11 SDC ; 12 SDC ; W 10 ; W 11	350	1015	460	3075	IND	-	TL	143 A8											
Ø 20"	Tire size	RIM	S.W. (mm)	O.D. (mm)	SLR (mm)	RC (mm)	Version	PR	Type	LI/SS												
												340/80 - 20	11	12 ; 11 SDC ; 12 SDC ; W 10 ; W 11	350	1065	491	3272	IND	-	TL	144 A8
												380/75 - 20	W 12	12 ; 12 SDC ; W 11 ; 12 SDC ; W 13 ; 13 SDC ; 13	385	1080	500	3273	IND	-	TL	148 A8
												400/70 - 20	13	12 SDC ; 13 SDC ; 14	405	1080	501	3303	IND	-	TL	156 A8
	400/70 - 20	13	12 SDC ; 13 SDC ; 14	405	1080	501	3303	IND	16	TL	149 A8											
Ø 24"	Tire size	RIM	S.W. (mm)	O.D. (mm)	SLR (mm)	RC (mm)	Version	PR	Type	LI/SS												
												400/70 - 24	13	DW 12 ; 13 SDC ; DW 13 ; DW 13 L ; DW 14 L	395	1175	544	-	IND	-	TL	158 A8
												400/80 - 24	DW 13	DW 12 ; DW 13 L ; DW 14 L	405	1250	570	3781	IND	20	TL	162 A8
												440/80 - 24	DW 14 L	DW 13 ; DW 13 L ; DW 15 L	455	1315	610	3986	IND	22	TL	168 A8
												460/70 - 24	DW 15 L	DW 14 L ; DW 16 L	460	1250	-	-	IND	-	TL	159 A8
												500/70 - 24	DW 16 L	DW 15 L ; DW 18 L	505	1300	579	3926	IND	-	TL	164 A8
	480/80 - 26	DW 15 L	DW 16 L	490	1410	643	4272	IND	-	TL	160 A8											
Ø 28"	Tire size	RIM	S.W. (mm)	O.D. (mm)	SLR (mm)	RC (mm)	Version	PR	Type	LI/SS												
	440/80 - 28	DW 14 L	DW 13 ; DW 13 L ; DW 15 L	450	1420	632	4299	IND	-	TL	156 A8											

IND: Industrial



Bias

Technologies



Performance





AT 603

AT 603 is a bias agro-industrial tire for implement machinery and backhoe loaders. AT 603 has been engineered to ensure great durability and traction on drive wheels providing best performance on every surface as well as excellent self-cleaning properties. The AT 603 "special" version has a reinforced casing, while the "HD" version offers improved cut and chip resistance.



Technologies



Performance



Ø 18"	Tire size	RIM		S.W. (mm)	O.D. (mm)	SLR (mm)	RC (mm)	Version	PR	Type	LI/SS	
		Rec.	Alt.								Drive Wheel	Free Rolling
	10.5/80 - 18	W 9	W 8 ; 9	274	907	405	2657	STD	10	TL	119A8	131A8
	10.5/80 - 18	W 9	W 8 ; 9	274	907	405	2657	HD	10	TL	119A8	131A8
	10.5/80 - 18	W 9	W 8 ; 9	274	907	405	2657	SPL	10	TL	119A8	131A8
	12.5/80 - 18	W 9	11	308	987	448	3027	STD	12	TL	129A8	142A8

STD: Standard - HD: Heavy Duty - SPL: Special

Ø 18"	Tire size	RIM		S.W. (mm)	O.D. (mm)	SLR (mm)	RC (mm)	Version	PR	Type	LI/SS	
		Rec.	Alt.								Drive Wheel	Free Rolling
	12.5/80 - 18	W 9	11	308	987	448	3027	SPL	12	TL	129A8	142A8
	12.5/80 - 18	W 9	11	308	987	448	3027	STD	16	TL	135A8	148A8
	12.5/80 - 18	W 9	11	308	987	448	3027	STD	18	TL	138A8	150A8

Ø 25"	Tire size	RIM Rec.	RIM Alt.	S.W. (mm)	O.D. (mm)	SLR (mm)	RC (mm)	Version	PR	Type	Drive Wheel	Free Rolling
	15.5 - 25	12.00/1.3	12.00/1.3 (DC)	410	1265	577	3861	STD	12	TL	-	-

SPL: Special - STD: Standard





AT 621

AT 621 is suitable for backhoe loaders and compact loaders in all digging and loading operations in agriculture. The AT 621 tire features an extra deep tread which ensures great cut and chip resistance and higher durability. In addition, this BKT tire ensures great durability and self cleaning properties. AT 621 is available in several versions to meet the most differing user requirements.

Performance



Ø 15"	Tire size	RIM		S.W. (mm)	O.D. (mm)	SLR (mm)	RC (mm)	Version	PR	Type	LI/SS	
		Rec.	Alt.								Drive Wheel	Free Rolling
	33 X 12.5 - 15	10.00 F SDC	-	318	851	385	2493	STD	8	TT	-	-
Ø 16"	9.00 - 16	6.50 H	6.00 G	260	925	-	-	IND	16	TT	137A6	
	12.5/70 - 16	10 LB	-	315	855	385	2584	STD	8	TL	-	-
	12.5/70 - 16	10 LB	-	315	855	385	2584	STD	14	TL	-	-
	12.5/70 - 16	10 LB	-	315	855	385	2584	STD	14	TT	-	-
Ø 18"	12.5/80 - 18	W 9	11.0	308	987	446	2950	STD	12	TT	129A8	142A8
	12.5/80 - 18	W 9	11.0	308	987	446	2950	STD	12	TL	129A8	142A8
	12.5/80 - 18	W 9	11.0	308	987	446	2950	STD	12	TT	129A8	142A8
	12.5/80 - 18	W 9	11.0	308	987	446	2950	STD	12	TL	129A8	142A8
	12.5/80 - 18	W 9	11	308	987	446	2950	SPL	12	TL	129A8	142A8
	12.5/80 - 18	W 9	11.0	308	987	446	2950	STD	16	TT	135A8	148A8
	12.5/80 - 18	W 9	11.0	308	987	446	2950	STD	16	TL	135A8	148A8
	12.5/80 - 18	W 9	11.0	308	987	446	2950	IND HD	16	TL	135A8	148A8
	15.5/60 - 18	W 13	-	400	950	428	2871	STD	10	TL	139A8	
	15.5/60 - 18	W 13	-	400	950	428	2871	STD	12	-	141A2	

STD: Standard - IND: Industrial - IND HD: Industrial HD



Ø 18"	Tire size	RIM		S.W. (mm)	O.D. (mm)	SLR (mm)	RC (mm)	Version	PR	Type	LI/SS	
		Rec.	Alt.								Drive Wheel	Free Rolling
	15.5/70 - 18	W 13	-	400	1030	474	3111	STD	10	TL	-	-
Ø 20"	12.5 - 20	11.0	-	325	1040	-	-	STD	12	TT	-	-
	17.5/65 - 20	W 14 L	-	450	1090	490	3294	STD	10	TL	-	-
	42 X 17 - 20	14.00 TG SDC	-	432	1073	480	3198	STD	10	TT	-	-
	400/70 - 20	13	12 SDC; 13 SDC; 14	405	1090	499	3229	STD	-	TL	149A8	
	400/70 - 20	13	12 SDC; 13 SDC; 14	405	1090	499	3229	STD	-	TL	152 B/168 A2	
Ø 24"	16.9 - 24	DW 15 L	DW 14 L	450	1302	582	3776	IND	12	TL	149A8	
	17.5L - 24	DW 15 L	DW 14 L	450	1255	558	3752	STD	8	TL	139A8	
	19.5L - 24	DW 16 L	-	482	1305	587	3936	STD	12	TL	151A8	
Ø 26"	18.4 - 26	DW 16 L	DW 15 L	480	1425	636	4133	STD	12	TT	156A8	
Ø 28"	16.9 - 28	DW 15 L	DW 14 L	450	1410	639	4199	IND	12	TT	152A8	
	16.9 - 28	DW 15 L	DW 14 L	450	1410	639	4199	IND	12	TL	152A8	
	16.9 - 28	DW 15 L	DW 14 L	450	1410	639	4199	IND	12	TT	152A8	
	16.9 - 28	DW 15 L	DW 14 L	450	1410	639	4199	IND	12	TL	152A8	
	16.9 - 28	DW 15 L	DW 14 L	450	1410	639	4199	IND	12	TL	152A8	
Ø 30"	16.9 - 30	DW 15 L	DW 14 L	450	1460	670	4398	IND	12	TL	153A8	

STD: Standard - IND: Industrial



MP 567

MP 567 is an agro-industrial tire suitable for field and road transport and municipality/maintenance operations. It is the perfect tire for telehandlers and implement machinery. The MP 567 tire provides good traction in all the weather conditions as well as excellent self-cleaning properties. This tire ensures a comfortable driving experience, together with a longer service life.

Performance

- Durability
- Traction
- Self-Cleaning
- Comfort

Ø 15"	Tire size	RIM		S.W. (mm)	O.D. (mm)	SLR (mm)	RC (mm)	Version	PR	Type	LI/SS	
		Rec.	Alt.								Drive Wheel	Free Rolling
	11.5/80 - 15	8 LB	-	290	875	-	-	STD	12	TL	-	-
Ø 15.3"	10.0/75 - 15.3	9.0	-	258	774	355	2310	STD	10	TL	-	-
	10.0/75 - 15.3	9.0	-	258	774	355	2310	IMP	10	TL	111A8	123A8
	10.0/75 - 15.3	9.0	-	258	774	355	2310	STD	12	TL	-	-
	10.0/75 - 15.3	9.0	-	258	774	355	2310	IMP	12	TL	114A8	126A8
	10.0/75 - 15.3	9.0	-	258	774	355	2310	STD	14	TL	-	-
	10.0/75 - 15.3	9.0	-	258	774	355	2310	IMP	14	TL	118A8	130A8
	10.0/75 - 15.3	9.0	-	258	774	355	2310	STD	18	TL	-	-
	10.0/75 - 15.3	9.0	-	258	774	355	2310	IMP	18	TL	123A8	135A8
	11.5/80 - 15.3	9.0	-	292	868	393	2578	STD	10	TL	-	-
	11.5/80 - 15.3	9.0	-	292	868	393	2578	IMP	10	TL	119A8	131A8
	11.5/80 - 15.3	9.0	-	292	868	393	2578	STD	14	TL	-	-
	11.5/80 - 15.3	9.0	-	292	868	393	2578	IMP	14	TL	126A8	139A8
	11.5/80 - 15.3	9.0	-	292	868	393	2578	STD	18	TL	-	-
	11.5/80 - 15.3	9.0	-	292	868	393	2578	IMP	18	TL	130A8	143A8

STD: Standard - IMP: Implement



Ø 18"	Tire size	RIM		S.W. (mm)	O.D. (mm)	SLR (mm)	RC (mm)	Version	PR	Type	LI/SS	
		Rec.	Alt.								Drive Wheel	Free Rolling
	10.5 - 18	9	9 SDC	270	905	415	2768	STD	10	TT	-	-
	10.5 - 18	9	9 SDC	270	905	415	2768	STD	10	TL	-	-
	10.5 - 18	9	9 SDC	270	905	415	2768	STD	12	TL	-	-
	10.5 - 18	9	9 SDC	270	905	415	2768	SPL	12	TL	-	-
	12.5 - 18	11	12 SDC	325	990	450	2940	STD	10	TT	-	-
	12.5 - 18	11	12 SDC	325	990	450	2940	STD	10	TL	-	-
	12.5 - 18	11	12 SDC	325	990	450	2940	STD	12	TT	-	-
	12.5 - 18	11	12 SDC	325	990	450	2940	STD	12	TL	-	-
	12.5 - 18	11	12 SDC	325	990	450	2940	STD	16	TL	-	-
Ø 19.5"	18 - 19.5	14.00	-	460	1104	498	3280	STD	14	TL	-	-
	18 - 19.5	14.00	-	460	1104	498	3280	STD	16	TL	-	-
	18 - 19.5 IND	14.00	-	460	1104	498	3280	IND	16	TL	160 B / 162 A8	
	18 - 19.5	14.00	-	460	1104	498	3280	STD	18	TL	-	-
	18 - 19.5 IND	14.00	-	460	1104	498	3280	STD	18	TL	165 B / 167 A8	
Ø 20"	10.5 - 20	9	9 SDC	270	955	445	2880	STD	10	TT	-	-

STD: Standard - SPL: Special -IND: Industrial



MP 567

MP 567 is an agro-industrial tire suitable for field and road transport and municipality/maintenance operations. It is the perfect tire for telehandlers and implement machinery. The MP 567 tire provides good traction in all the weather conditions as well as excellent self-cleaning properties. This tire ensures a comfortable driving experience, together with a longer service life.

Performance

- Durability
- Traction
- Self-Cleaning
- Comfort

Ø 20"	Tire size	RIM		S.W. (mm)	O.D. (mm)	SLR (mm)	RC (mm)	Version	PR	Type	LI/SS	
		Rec.	Alt.								Drive Wheel	Free Rolling
	10.5 - 20	9	9 SDC	270	955	445	2880	STD	10	TL	-	-
	12.5 - 20	11.0	12 SDC	325	1040	475	3090	STD	10	TT	-	-
	12.5 - 20	11.0	12 SDC	325	1040	475	3090	STD	10	TL	-	-
	12.5 - 20	11.0	12 SDC	325	1040	475	3090	HD	10	TL	-	-
	12.5 - 20	11.0	12 SDC	325	1040	475	3090	STD	12	TT	-	-
	12.5 - 20	11.0	12 SDC	325	1040	475	3090	STD	12	TL	-	-
	12.5 - 20	11.0	12 SDC	325	1040	475	3090	STD	16	TL	-	-
	14.5 - 20	11	12 SDC	360	1116	495	3315	STD	10	TL	-	-
	14.5 - 20	11	12 SDC	360	1116	495	3315	STD	12	TL	-	-
	14.5 - 20	11	12 SDC	360	1116	495	3315	STD	14	TL	-	-
	14.5 - 20	11	12 SDC	360	1116	495	3315	HD	14	TL	-	-
	14.5 - 20	11	12 SDC	360	1116	495	3315	STD	16	TL	-	-
	14.5 - 20	11	12 SDC	360	1116	495	3315	STD	18	TL	-	-
	16.0/70 - 20	13 SDC	12	405	1128	490	3350	STD	14	TL	-	-
	16.0/70 - 20	13 SDC	12	405	1128	490	3350	STD	14	TT	-	-

STD: Standard - HD: Heavy Duty



MP 570

MP 570 is an agro-industrial tire, which is suitable for excavators and backhoe loaders. This tire provides good traction and durability, as well as excellent self-cleaning properties in all operating conditions.



Performance

- Durability
- Traction
- Self-Cleaning

Ø 18"	Tire size	RIM		S.W. (mm)	O.D. (mm)	SLR (mm)	RC (mm)	Version	PR	Type	LI/SS
		Rec.	Alt.								
	12.5 - 18	11	12 SDC	308	990	450	2950	STD	10	TL	-
	12.5 - 18	11	12 SDC	308	990	450	2950	STD	12	TL	-

Ø 20"	Tire size	RIM		S.W. (mm)	O.D. (mm)	SLR (mm)	RC (mm)	Version	PR	Type	LI/SS
		Rec.	Alt.								
	12.5 - 20	11	12 SDC	335	1050	480	3130	STD	10	TL	-
	12.5 - 20	11	12 SDC	335	1040	480	3130	STD	12	TL	-
	14.5 - 20	11	12 SDC	360	1116	505	3325	STD	12	TL	-

STD: Standard



MP 585

MP 585 is an agro-industrial tire, which is suitable for multi-purpose vehicles in municipality/maintenance applications. This tire is specially engineered with a block pattern that offers maximum stability and durability in the most difficult working conditions, also at high speeds.



Technologies

- Block Pattern
- High Speed
- Performance
- Stability
- Durability

Ø 20"	Tire size	RIM		S.W. (mm)	O.D. (mm)	SLR (mm)	RC (mm)	Version	PR	Type	LI/SS
		Rec.	Alt.								
	6.50 - 20	5.50 F	4.00 E ; 5.00 F	200	875	-	-	STD	10	TT	106 A6
	10.5 - 20	9	9 SDC	273	970	455	2890	STD	10	TL	-
	12.5 - 20	11	12 SDC	335	1050	480	3130	STD	12	TL	-

STD: Standard



MP 590

MP 590 is an agro-industrial tire suitable for loading operations with telehandlers and forklifts. This tire provides good traction and excellent stability as well as increased durability.

Ø 22.5"	Tire size	RIM		S.W. (mm)	O.D. (mm)	SLR (mm)	RC (mm)	Version	PR	Type	LI/SS
		Rec.	Alt.								
	18 - 22.5	14.0	-	480	1190	530	3534	STD	16	TL	-
	18 - 22.5	14.0	-	480	1190	530	3534	STD	20	TL	-

STD: Standard

Performance

- Stability
- Traction
- Durability



MP 600

MP 600 is an agro-industrial tire, suitable for municipality/maintenance operations with telehandlers and implement machinery, providing a comfortable driving experience. This tire provides good traction and excellent self-cleaning properties along with an extended product life-cycle.

Ø 18"	Tire size	RIM		S.W. (mm)	O.D. (mm)	SLR (mm)	RC (mm)	Version	PR	Type	LI/SS
		Rec.	Alt.								
	10.5 - 18	9	9 SDC	272	920	420	2740	STD	10	TL	-
	12.5 - 18	11	12 SDC	308	990	450	2950	STD	10	TL	-
	12.5 - 18	11	12 SDC	308	990	450	2950	STD	12	TL	-
Ø 20"	400/70 - 20	13 SDC	12	405	1085	-	-	STD	14	TL	-
Ø 24"	400/70 - 24	13 SDC	12	405	1185	545	3530	STD	10	TL	-
	400/70 - 24	13 SDC	12	405	1185	545	3530	STD	14	TL	-
	400/70 - 24	13 SDC	12	405	1185	545	3530	SPL	14	TL	-
	400/70 - 24	13 SDC	12	405	1185	545	3530	STD	18	TL	158A8

STD: Standard - SPL: Special



Performance

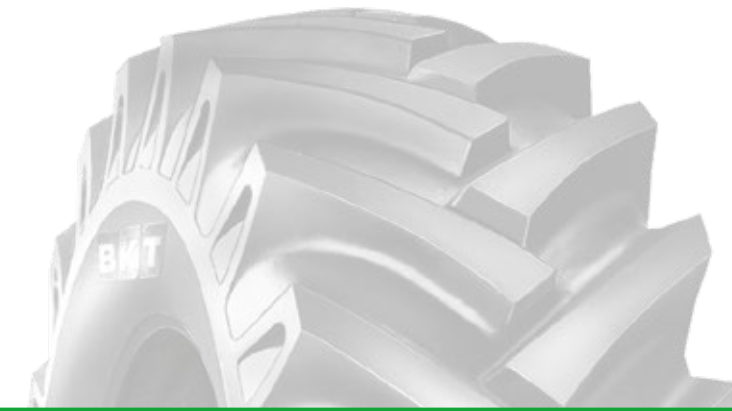
- Durability
- Traction
- Self-Cleaning
- Comfort





AS 504

AS 504 is an agro-industrial tire mainly designed for soil tillage, implement and material-handling operations. This tire, which features excellent self-cleaning properties and increased grip, is suitable for field trailers and telehandlers. AS 504 is available in several versions to meet specific end-user requirements: an "HD" version with a special cut-and-chip resistance compound, while the "special" version has a reinforced casing that ensures a longer tire life.



Technologies

- Aramid Belted**
- Heavy Duty**
- Reinforced Carcass**
- Performance**
- Durability**
- Self-Cleaning**
- Traction**
- Stability**
- Cut and Chip Resistance**

Ø 12"	Tire size	RIM		S.W. (mm)	O.D. (mm)	SLR (mm)	RC (mm)	Version	PR	Type	LI/SS	
		Rec.	Alt.								Drive Wheel	Free Rolling
	6.5/80 - 12	5 J	5 JA	163	608	273	1851	STD	4	TT	72A8	84A8
	6.5/80 - 12	5 J	5 JA	163	608	273	1851	STD	4	TL	72A8	84A8
	6.5/80 - 12	5 J	5 JA	163	608	273	1851	STD	6	TT	80A8	93A8
	6.5/80 - 12	5 J	5 JA	163	608	273	1851	STD	6	TL	80A8	93A8
	6.5/80 - 12	5 J	5 JA	163	608	273	1851	HD	6	TT	80A8	93A8
	7.00 - 12	4.5	-	187	683	300	2001	STD	4	TT	75A8	88A8
	7.00 - 12	4.5	-	187	683	300	2001	STD	4	TL	75A8	88A8
	7.00 - 12	4.5	-	187	683	300	2001	STD	6	TL	83A8	95A8
	7.00 - 12	4.5	-	187	683	300	2001	STD	6	TT	83A8	95A8
	7.00 - 12	4.5	-	187	683	300	2001	AB	8	TL	88A8	100A8
	7.00 - 12	4.5	-	187	683	300	2001	SPL	8	TL	88A8	100A8
	10.0/80 - 12	9.00	7.0	270	730	335	2233	STD	10	TL	109A8	121A8
	11.0/65 - 12	9.00	-	273	700	321	2072	STD	8	TT	101A8	114A8
	11.0/65 - 12	9.00	-	273	700	321	2072	STD	8	TL	101A8	114A8
	26 X 12.00 - 12	10.50 AT	8.0 AT; 8.5 AT; 9.0 AT	310	648	298	1932	STD	-	TL	112A6	
Ø 15"	5.00 - 15	3.50 D	3.00 D; 4.00 E; 4 J	140	657	308	1957	STD	4	TT	67A8	79A8

STD: Standard - HD: Heavy Duty - AB: Aramid Belted - SPL: Special

Ø 15"	Tire size	RIM		S.W. (mm)	O.D. (mm)	SLR (mm)	RC (mm)	Version	PR	Type	LI/SS	
		Rec.	Alt.								Drive Wheel	Free Rolling
	5.00 - 15	3.50 D	3.00 D; 4.00 E; 4 J	140	657	308	1957	STD	6	TT	75A8	88A8
	5.00 - 15	3.50 D	3.00 D; 4.00 E; 4 J	140	657	308	1957	STD	6	TL	75A8	88A8
	7.5L - 15	6 LB	5 K; 5½ J; 5½ K	210	765	354	2280	STD	6	TT	97A8	109A8
	7.5L - 15	6 LB	5 K; 5½ J; 5½ K	210	765	354	2280	STD	8	TT	100A8	113A8
	7.5L - 15	6 LB	5 K; 5½ J; 5½ K	210	765	354	2280	STD	8	TL	100A8	113A8
	7.5L - 15	6 LB	5 K; 5½ J; 5½ K	210	765	354	2280	AB HD	8	TL	100A8	113A8
	7.5L - 15	6 LB	5 K; 5½ J; 5½ K	210	765	354	2280	HD	8	TT	100A8	113A8
	400/50 - 15	13 LB	-	395	790	369	2387	STD	-	TL	109A8	121A8
Ø 15.3"	10.0/75 - 15.3	9.00	-	264	780	345	2285	STD	8	TT	106A8	119A8
	10.0/75 - 15.3	9.00	-	264	780	345	2285	STD	8	TL	106A8	119A8
	10.0/75 - 15.3	9.00	-	264	780	345	2285	IND	8	TL	106A8	119A8
	10.0/75 - 15.3	9.00	-	264	780	345	2285	STD	10	TL	111A8	123A8
	10.0/75 - 15.3	9.00	-	264	780	345	2285	STD	14	TL	118A8	130A8
	10.0/75 - 15.3	9.00	-	264	780	345	2285	STD	18	TT	122A8	135A8
	10.0/75 - 15.3	9.00	-	264	780	345	2285	STD	18	TL	122A8	135A8

STD: Standard - HD: Heavy Duty - AB HD: Aramid Belted HD - IND: Industrial



AS 504

AS 504 is an agro-industrial tire mainly designed for soil tillage, implement and material-handling operations. This tire, which features excellent self-cleaning properties and increased grip, is suitable for field trailers and telehandlers. AS 504 is available in several versions to meet specific end-user requirements: an "HD" version with a special cut-and-chip resistance compound, while the "special" version has a reinforced casing that ensures a longer tire life.



Technologies

- Aramid Belted
- Heavy Duty
- Reinforced Carcass
-
- Durability
- Self-Cleaning
- Traction
- Stability
- Cut and Chip Resistance

Ø 15.3"	Tire size	RIM		S.W. (mm)	O.D. (mm)	SLR (mm)	RC (mm)	Version	PR	Type	LI/SS	
		Rec.	Alt.								Drive Wheel	Free Rolling
	11.5/80 - 15.3	9.00	-	290	867	380	2540	STD	8	TT	114A8	126A8
	11.5/80 - 15.3	9.00	-	290	867	380	2540	STD	8	TL	114A8	126A8
	11.5/80 - 15.3	9.00	-	290	867	380	2540	STD	10	TL	119A8	131A8
	11.5/80 - 15.3	9.00	-	290	867	380	2540	STD	12	TT	123A8	135A8
	11.5/80 - 15.3	9.00	-	290	867	380	2540	STD	12	TL	123A8	135A8
	11.5/80 - 15.3	9.00	-	290	867	380	2540	STD	14	TT	126A8	139A8
	11.5/80 - 15.3	9.00	-	290	867	380	2540	STD	14	TL	126A8	139A8
	27 X 10 - 15.3	9.00	-	260	695	317	2071	STD	8	TT	95A8	107A8
	27 X 10 - 15.3	9.00	-	260	695	317	2071	STD	8	TL	95A8	107A8

Ø 16"	Tire size	RIM		S.W. (mm)	O.D. (mm)	SLR (mm)	RC (mm)	Version	PR	Type	LI/SS	
		Rec.	Alt.								Drive Wheel	Free Rolling
	4.00 - 16	3.00 D	2.50 C	110	628	-	-	STD	4	TT	66A8	78A8
	6.00 - 16	4.00 E	4.50 E; 4½ K	164	735	343	2190	STD	6	TT	83A8	95A8
	6.00 - 16	4.00 E	4.50 E; 4½ K	164	735	343	2190	HD	6	TT	83A8	95A8
	6.00 - 16	4.00 E	4.50 E; 4½ K	164	735	343	2190	HD	8	TT	91A8	103A8
	7.50 - 16	5.50 F	4.50 E; 5.00 F; 4.00 E; 5 K; 6 LB; 6.00 F	209	803	372	2393	STD	6	TT	92A8	104A8

STD: Standard - SR: Stubble Resistant - HD: Heavy Duty

Ø 16"	Tire size	RIM		S.W. (mm)	O.D. (mm)	SLR (mm)	RC (mm)	Version	PR	Type	LI/SS	
		Rec.	Alt.								Drive Wheel	Free Rolling
	7.50 - 16	5.50 F	4.50 E; 5.00 F; 4.00 E; 5 K; 6 LB; 6.00 F	209	803	372	2393	STD	8	TT	99A8	112A8
	7.50 - 16	5.50 F	4.50 E; 5.00 F; 4.00 E; 5 K; 6 LB; 6.00 F	209	803	372	2393	STD	8	TL	99A8	112A8
	7.50 - 16	5.50 F	4.50 E; 5.00 F; 4.00 E; 5 K; 6 LB; 6.00 F	209	803	372	2393	HD	8	TT	99A8	112A8
	9.0/70 - 16	W 7	-	222	760	355	2285	STD	10	TL	106A8	119A8
	270/75 - 16	9.00	-	250	810	-	-	STD	-	TL	111A8	123A8

Ø 17"	Tire size	RIM		S.W. (mm)	O.D. (mm)	SLR (mm)	RC (mm)	Version	PR	Type	LI/SS	
		Rec.	Alt.								Drive Wheel	Free Rolling
	15.0/55 - 17	13.00	13	380	890	395	2608	STD	10	TL	122A8	134A8
	15.0/55 - 17	13.00	13	380	890	395	2608	STD	14	TL	129A8	141A8
	19.0/45 - 17	16.00	-	465	865	389	2578	STD	14	TL	131A8	144A8
	420/55 - 17	13.00	-	430	910	407	2712	STD	14	TL	129A8	142A8
	420/55 - 17	13.00	-	430	910	407	2712	STD	16	TL	133A8	145A8

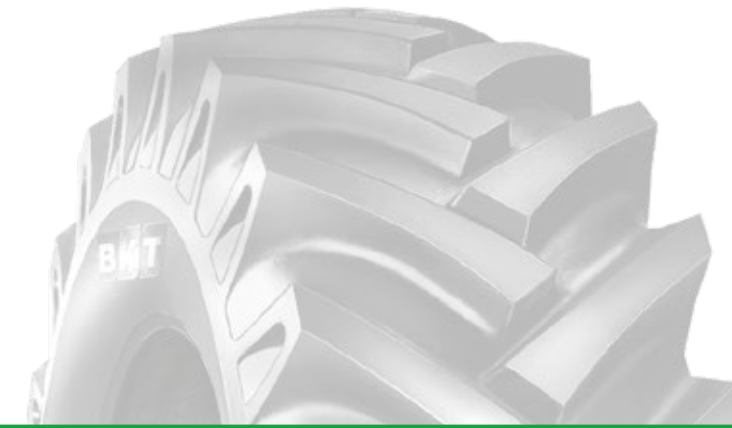
Ø 18"	Tire size	RIM		S.W. (mm)	O.D. (mm)	SLR (mm)	RC (mm)	Version	PR	Type	LI/SS	
		Rec.	Alt.								Drive Wheel	Free Rolling
	7.50 - 18	5.50 F	4.50 E; 6.00 F; 5.00 F	209	854	407	2649	STD	6	TT	94A8	106A8
	7.50 - 18	5.50 F	4.50 E; 6.00 F; 5.00 F	209	854	407	2649	STD	8	TT	101A8	114A8
	10.5/80 - 18	W 9	9; W 8	274	907	405	2657	STD	10	TL	119A8	131A8
	12.5/80 - 18	W 9	9; 11	308	987	438	2892	STD	12	TL	129A8	142A8
	12.5/80 - 18	W 9	9; 11	308	987	438	2892	SPL	12	TL	129A8	142A8

STD: Standard - HD: Heavy Duty - SPL: Special



AS 504

AS 504 is an agro-industrial tire mainly designed for soil tillage, implement and material-handling operations. This tire, which features excellent self-cleaning properties and increased grip, is suitable for field trailers and telehandlers. AS 504 is available in several versions to meet specific end-user requirements: an "HD" version with a special cut-and-chip resistance compound, while the "special" version has a reinforced casing that ensures a longer tire life.



Technologies



Aramid Belted



Heavy Duty



Reinforced Carcass

Performance



Durability



Self-Cleaning



Traction



Stability



Cut and Chip Resistance

Ø 18"	Tire size	RIM		S.W. (mm)	O.D. (mm)	SLR (mm)	RC (mm)	Version	PR	Type	LI/SS	
		Rec.	Alt.								Drive Wheel	Free Rolling
Ø 18"	12.5/80 - 18	W 9	9 ; 11	308	987	438	2892	STD	16	TL	135A8	148A8
	12.5/80 - 18	W 9	9 ; 11	308	987	438	2892	STD	18	TL	138A8	150A8
Ø 20"	7.50 - 20	5.50 F	4.50 E ; 6.00 F ; 5.00 F	209	904	422	2695	STD	8	TT	103A8	116A8
	16.0/70 - 20	13	12 SDC ; 14 ; 13 SDC	408	1097	487	3214	STD	10	TL	135A8	147A8
	16.0/70 - 20	13	12 SDC ; 14 ; 13 SDC	408	1097	487	3214	STD	12	TL	139A8	151A8
	16.0/70 - 20	13	12 SDC ; 14 ; 13 SDC	408	1097	487	3214	STD	14	TL	142A8	154A8
	16.0/70 - 20	13	12 SDC ; 14 ; 13 SDC	408	1097	487	3214	STD	16	TL	144A8	156A8
Ø 24"	400/70 - 20	13	12 SDC ; 14 ; 13 SDC	408	1097	487	3214	IND	-	TL	149A8	
Ø 24"	15.5/80 - 24	W 12	W 13 ; W 14 L	384	1262	566	3655	STD	10	TL	142A8	154A8

STD: Standard - IND: Industrial

Ø 24"	Tire size	RIM		S.W. (mm)	O.D. (mm)	SLR (mm)	RC (mm)	Version	PR	Type	LI/SS	
		Rec.	Alt.								Drive Wheel	Free Rolling
Ø 24"	15.5/80 - 24	W 12	W 13 ; W 14 L	384	1262	566	3655	STD	12	TL	145A8	157A8
	15.5/80 - 24	W 12	W 13 ; W 14 L	384	1262	566	3655	STD	14	TL	148A8	160A8
	15.5/80 - 24	W 12	W 13 ; W 14 L	384	1262	566	3655	SPL	14	TL	148A8	160A8
	15.5/80 - 24	W 12	W 13 ; W 14 L	384	1262	566	3655	STD	16	TL	151A8	163A8
	16.5/85 - 24	W 13	W 14 L ; W 15 L	415	1325	591	3837	STD	10	TL	146A8	158A8
	16.5/85 - 24	W 13	W 14 L ; W 15 L	415	1325	591	3837	STD	12	TL	151A8	163A8
	16.5/85 - 24	W 13	W 14 L ; W 15 L	415	1325	591	3837	STD	16	TT	155A8	168A8
	16.5/85 - 24	W 13	W 14 L ; W 15 L	415	1325	591	3837	STD	16	TL	155A8	168A8
	400/80 - 24	W 13	W 12 ; W 14 L	394	1262	566	3655	IND	-	TL	156A8	
	400/80 - 24	W 13	W 12 ; W 14 L	394	1262	566	3655	IND	-	TL	162A8	

STD: Standard - SPL: Special - IND: Industrial



Load Index Table

The load index is a code that defines a tire's maximum weight capacity at the speed given by its speed index provided that the usage conditions recommended by the Manufacturer are fully complied with.

Corresponding values of load index (LI) and load capacity per wheel (kg)

LI	kg	LI	kg	LI	kg	LI	kg
50	190	85	515	120	1400	155	3875
51	195	86	530	121	1450	156	4000
52	200	87	545	122	1500	157	4125
53	206	88	560	123	1550	158	4250
54	212	89	580	124	1600	159	4375
55	218	90	600	125	1650	160	4500
56	224	91	615	126	1700	161	4625
57	230	92	630	127	1750	162	4750
58	236	93	650	128	1800	163	4875
59	243	94	670	129	1850	164	5000
60	250	95	690	130	1900	165	5150
61	257	96	710	131	1950	166	5300
62	265	97	730	132	2000	167	5450
63	272	98	750	133	2060	168	5600
64	280	99	775	134	2120	169	5800
65	290	100	800	135	2180	170	6000
66	300	101	825	136	2240	171	6150
67	307	102	850	137	2300	172	6300
68	315	103	875	138	2360	173	6500
69	325	104	900	139	2430	174	6700
70	335	105	925	140	2500	175	6900
71	345	106	950	141	2575	176	7100
72	355	107	975	142	2650	177	7300
73	365	108	1000	143	2725	178	7500
74	375	109	1030	144	2800	179	7750
75	387	110	1060	145	2900	180	8000
76	400	111	1090	146	3000	181	8250
77	412	112	1120	147	3075	182	8500
78	425	113	1150	148	3150	183	8750
79	437	114	1180	149	3250	184	9000
80	450	115	1215	150	3350	185	9250
81	462	116	1250	151	3450	186	9500
82	475	117	1285	152	3550	187	9750
83	487	118	1320	153	3650	188	10000
84	500	119	1360	154	3750	189	10300

Speed Index Table

The speed code is a value that indicates the maximum admitted speed at which the tire can carry the weight corresponding to its load index provided that the usage conditions recommended by the Manufacturer are fully complied with.

Speed index	A1	A2	A3	A4	A6	A8	B	C	D	E	F	J
Km/h	5	10	15	20	30	40	50	60	65	70	80	100
mph	3	6	9	12	19	25	31	37	40	43	50	62



Corporate Office

Balkrishna Industries Ltd.

BKT HOUSE, C/15, Trade World, Kamala Mills Compound, Senapati Bapat Marg, Lower Parel, Mumbai - 400013, India
 Tel: (+91) 22-6666 3800 - Fax: (+91) 22-6666 3898/99 - e-mail: info@bkt-tires.com - bkt-tires.com

BKT Europe srl

Viale Della Repubblica,133
 20831 Seregno (MB), Italy
 Tel: (+39) 0362 33 03 28
 (+39) 0362 32 51 07
 Fax: (+39) 0362 23 24 72

BKT USA Inc.

202 Montrose West, Suite 240/250
 Copley, (Akron) Ohio 44321, USA
 Tel: (+1) 330 836 1090
 Fax: (+1) 330 836 1091
 Toll Free: (+1) 888 660 0662

BKT Tires (CANADA) Inc.

55 York Street, Suite 401
 Toronto, Ontario M5J 1R7, Canada
 Tel: AG/IND (+1) 905 641 5636
 OTR (+1) 780 888 5667
 Fax: (+1) 416 229 1711



bkt-tires.com

Proud Sponsor of



OFFICIAL OFF-HIGHWAY TIRE OF THE KFC BBL

